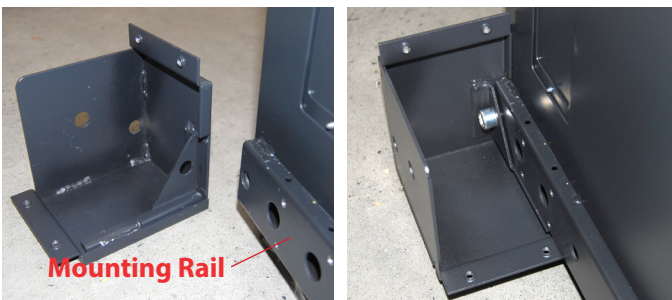


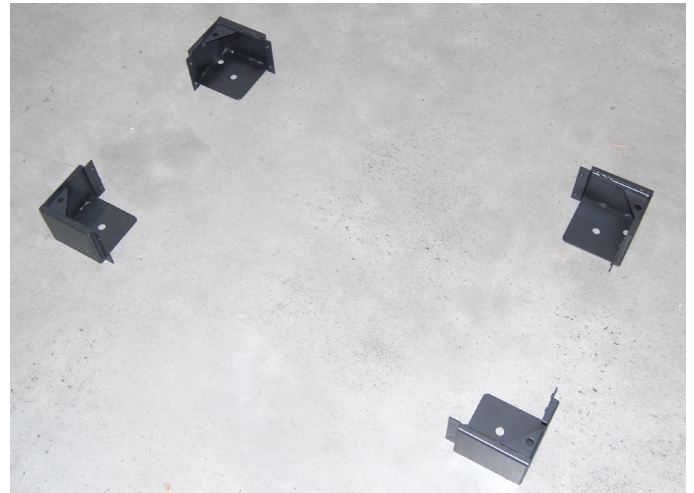
**Step 1:** Assemble plinth, ensuring the corner sections are orientated with the cabinet mounting rails.



**Step 2:** Use plinth as a template to mark out the holes to drill. Bolt plinth to the ground.



**Step 3:** Remove side skirts.



**Step 4:** place cabinet onto the corner sections and bolt cabinet onto them.



**Step 5:** Replace side skirts.

